

# BUILD A DREAM

## Charming Country Exterior

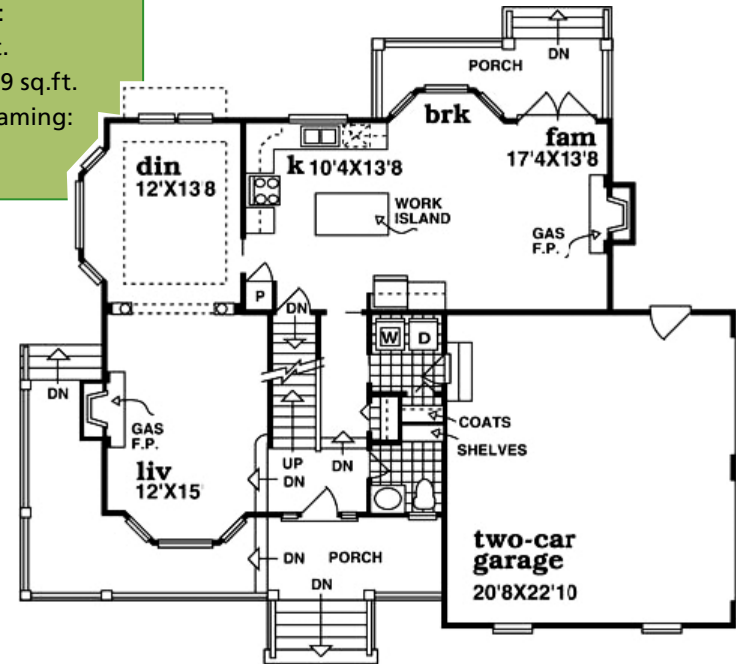


1,924 square feet

HMAFAPW01306 Details:

- ◆ Bedrooms: 3+
- ◆ Baths: 2-1/2
- ◆ Main floor: 1,007 sq. ft.
- ◆ Garage: 609 sq.ft.
- ◆ Exterior Framing: 2x6

This lovely home has plenty of country flavor with a wraparound porch, bay window, and a side entry garage that preserves curb appeal.



This charming country home displays a harmonious exterior and elegant, versatile interior.

Formal living and dining rooms sit to the left, full of elegance with bay windows, a fireplace, and graceful columns. The casual family area occupies the back with one large, open area designed for togetherness and relaxation.

The gourmet kitchen features a large work island and a breakfast area with its own bay window. A fireplace warms the family room, which opens to the rear porch through French doors.

Second-floor sleeping quarters include the master suite with a soaker tub, separate shower, and a walk-in closet. Two additional bedrooms use the full hall bath. Nearby, a huge bonus room with skylights adds flexible space that can become almost anything: a home office, playroom, or art studio are possibilities.

A downloadable study of Plan HMAFAPW01306, including general information on building costs and financing, is available at [www.houseoftheweek.com](http://www.houseoftheweek.com). To receive a study plan by mail, include a check or money order for \$10 plus state and local sales tax, payable to House of the Week. Mail to: Hanley Wood, 3275 W. Ina Rd., Suite 260, Tucson, AZ 85741. Be sure to reference the plan number. To view hundreds of home designs, visit [www.houseoftheweek.com](http://www.houseoftheweek.com).

Associated Press