

BUILD A DREAM

A Choice of Styles



1,640 square feet

HMAFAPW00760 Details:

- ◆ Bedrooms: 3
- ◆ Baths: 2
- ◆ Upper Floor: 554 sq. ft.
- ◆ Main floor: 1,086 sq. ft.
- ◆ Total Living Area: 1,640 sq. ft.
- ◆ Exterior Wall Framing: 2x6

With this home's completely wrapping porch, take your pick of places to sit outside.

A wraparound porch, a welcoming entrance, and a thoughtful floor plan make this house, Plan HMAFAPW00760 from Homeplans.com, a pleasure to come home to.

The home features 1,640 square feet of living space on two levels.

Just inside the foyer, a built-in seat provides the perfect spot to take off muddy shoes. Further in, a fire-place framed by windows warms the great room, which is enhanced by a sloping ceiling.

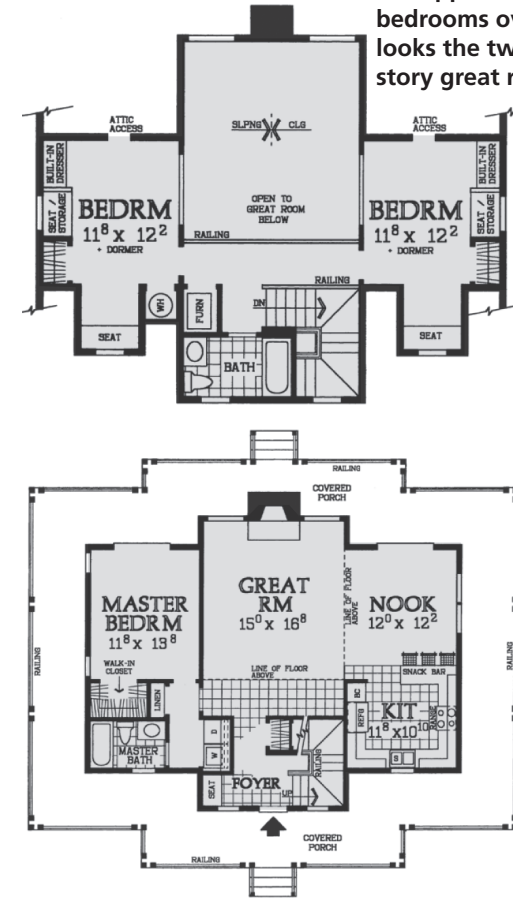
The adjacent nook and efficient U-shaped kitchen combine with the great room to create a spacious

area for gatherings. The seated snack bar has room for three, making it a handy spot for serving breakfast or appetizers.

The relaxing master bedroom is enhanced by a pampering bath, walk-in closet, and porch access. A linen closet sits close to the laundry area in this wing, making it easy to put away clean sheets.

Upstairs, two secondary bedrooms each boast a window seat, built-in dresser, additional seat with storage, and attic access. A bridge between them holds the full hall bath and overlooks the great room.

A bridge between the upper floor bedrooms overlooks the two-story great room.



A downloadable study plan of this house, Plan HMAFAPW00760, including general information on building costs and financing, is available at www.houseoftheweek.com. To receive a study plan by mail, include a check or money order for \$10, plus state and local sales tax, payable to House of the Week. Mail to: Hanley Wood, 3275 W. Ina Rd., Suite 260, Tucson, AZ 85741. Be sure to reference the plan number. To view hundreds of home designs, visit www.houseoftheweek.com.

Associated Press