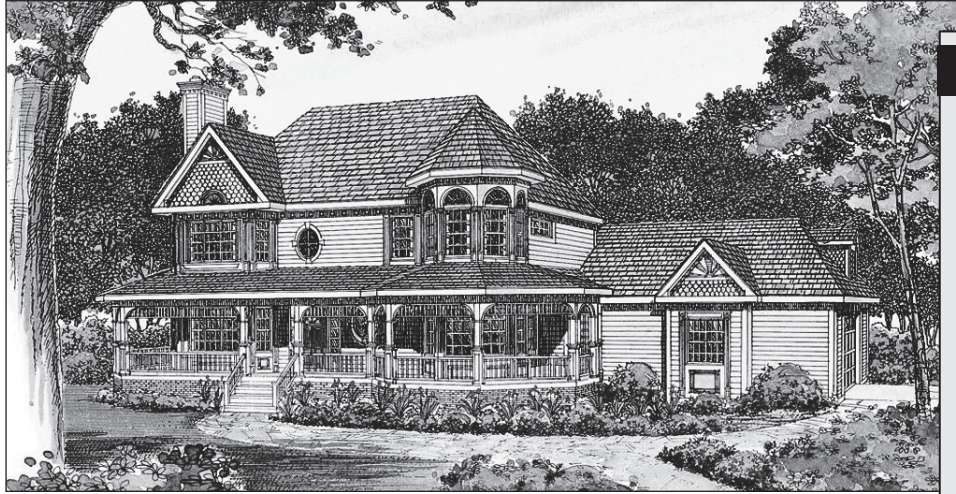


# BUILD A DREAM

## Wraparound Porch



The most impressive part of this lovely Victorian-influenced design is the wraparound porch, which stretches nearly all the way around the home. The bay windows add old-fashioned glamour, too.

The wraparound porch is the defining feature of this Victorian-style design. Head inside and you'll be greeted by a bright and comfortable floor plan. An unfinished basement adds 1,186 square feet of space that can be used for storage or finished later.

Inside the front door, the living room sits on the left, offering a cozy fireplace and easy access to the dining room. In back to the right, the family room awaits more casual gatherings. The kitchen counter seats two for snacks, with a bay window looking out to the porch.

2,174 square feet

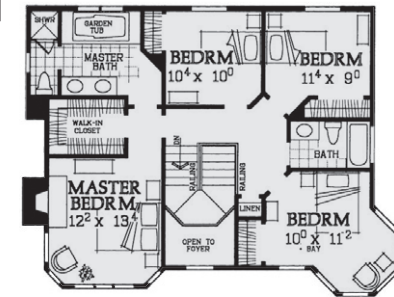
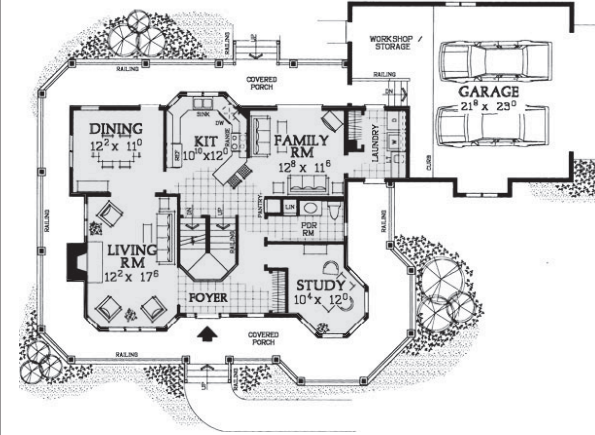
HMAFAPW00822 details:

- ◆ Bedrooms: 4+
- ◆ Baths: 2 1/2
- ◆ Main floor: 1,186 sq. ft.
- ◆ Upper floor: 988 sq. ft.
- ◆ Garage: 664 sq. ft.
- ◆ Standard Basement: 1,186 sq. ft.
- ◆ Exterior Framing: 2x6
- ◆ Foundation options: Standard basement

More than just a pretty face, the turret houses a secluded study on the first level and provides another sunny bay window for a family bedroom upstairs.

The second-level master suite boasts its own fireplace, a walk-in closet, and a lavish bath with a garden tub and twin sinks.

You'll appreciate the thoughtful storage spaces throughout the home, including a workshop area in the two-car garage and a linen closet in the powder bathroom.



Four second-floor bedrooms make this a perfect design for a growing family.