

# Wonderful Use of Space



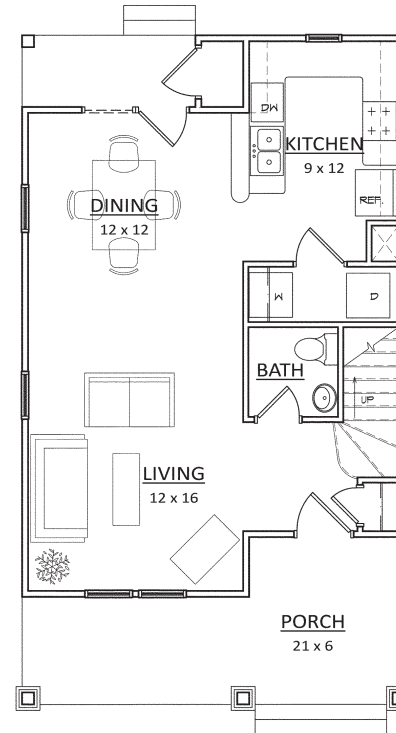
The wide front porch is a great place to relax outside.

## 1,190 square feet

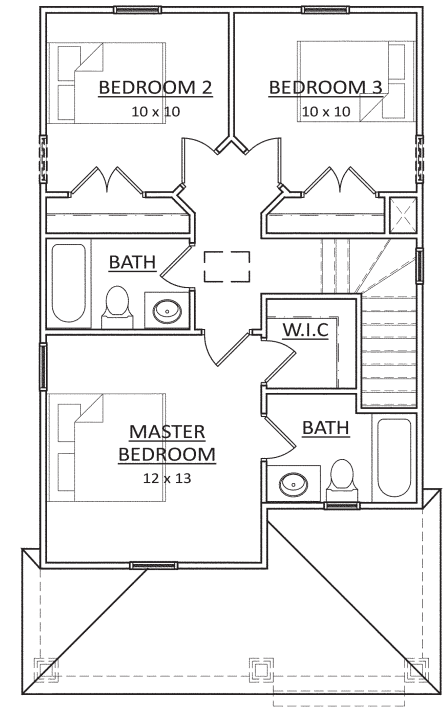
HOTW130032 Details

- **Bedrooms:** 3
- **Baths:** 2½
- **Main Level:** 560 sq. ft.
- **Second Level:** 630 sq. ft.
- **Dimensions:** 21' 4" x 37' 4"
- **Exterior Wall Framing:** 2x4
- **Foundation Options:** Crawlspace

Can you create a spacious family home with just 1,190 square feet of living space? Yes, and here's the proof. This 21-foot-wide plan extends space visually with a very open layout inside and a wide porch outside. The living room flows without interruption into the dining room, which is easily served by the kitchen's snack counter. Upstairs, the master suite boasts a walk-in closet and full private bath, with the two secondary bedrooms using a hall bath.



main floor



second floor