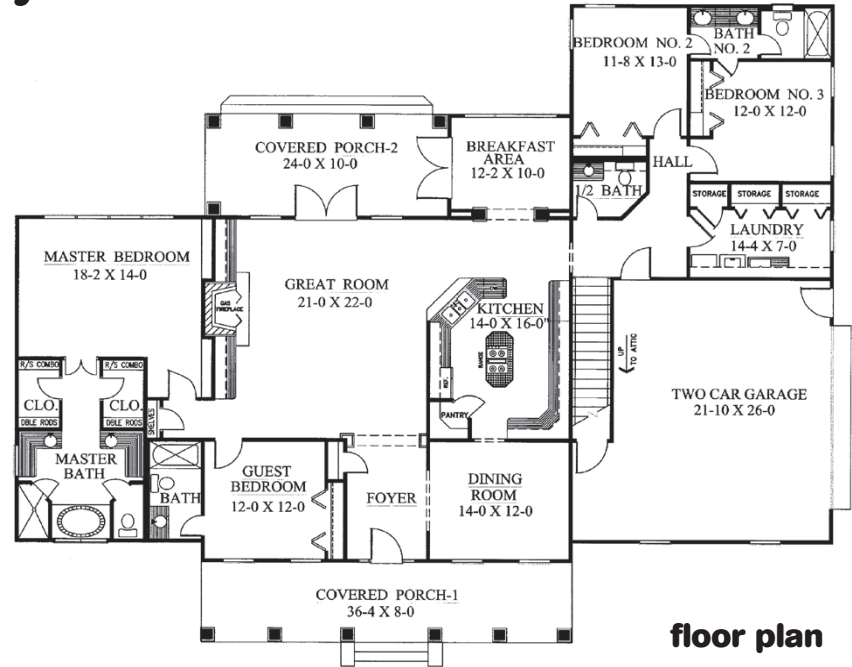


Country Charm



The wide front porch adds a welcoming vibe to this gorgeous brick-and-siding exterior.



2,669 square feet

HOTW140020 Details

- **Bedrooms:** 4
- **Baths:** 3½
- **Dimensions:** 80'0" x 63'0"
- **Exterior Wall Framing:** 2x4
- **Foundation Options:** Crawlspac, Slab, Unfinished Basement

This timeless design features a generous front porch for welcoming guests. Inside, an efficient floor plan is distinguished by elegant arches marking the transitions from room to room. The spacious island kitchen includes a built-in planning desk and a corner pantry. A sunny breakfast room accesses the back porch through French doors, as does the great room with a cozy hearth and built-in cabinetry. The master bedroom is separate from the two family bedrooms, which are located off a back hallway convenient to the laundry and garage. The guest bedroom near the front of the home would also make a great home office.