

B U I L D   A   D R E A M

# Lovely Farmhouse with Smart Details



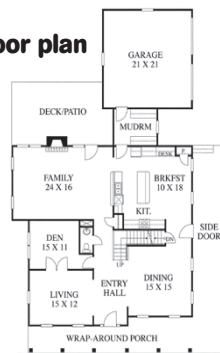
With its graceful wraparound porch and discreet garage (it's set back and entered from the side), this farmhouse would be a great fit in an established neighborhood.

To build this home, you can order a complete set of construction documents by calling toll-free (866) 772-1013 or visiting [www.ePlans.com/HouseOfTheWeek](http://www.ePlans.com/HouseOfTheWeek). Enter the design number to locate the plan and view more images and details. At [www.ePlans.com/HouseOfTheWeek](http://www.ePlans.com/HouseOfTheWeek), you can view previously featured plans, browse other specialty collections, or use our search filters to help you find exactly what you want from over 28,000 home designs. Most plans can be customized to suit your lifestyle. See images of the plan online at [www.ePlans.com/HouseOfTheWeek](http://www.ePlans.com/HouseOfTheWeek). Image Credit: Photo courtesy of James Wentling/Architects. Printed with permission by Hanley-Wood, LLC. All rights reserved.

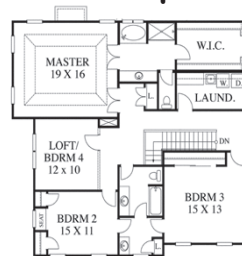
## 3,309 square feet floor plan

HOTW140025 Details

- **Bedrooms:** 3
- **Baths:** 2½
- **Main Level:** 1,723 sq. ft.
- **Upstairs Level:** 1,586 sq. ft.
- **Dimensions:** 52'0" x 76'0"
- **Exterior Wall Framing:** 2x4
- **Foundation Options:** Unfinished Basement



## second floor plan



This country farmhouse makes visitors feel welcome upon first glance, thanks to a lovely wraparound porch. Inside, you can entertain in the formal living room, which opens to the den, or host a special dinner in the dining room. For more casual hangouts, you can't beat the family room (complete with a cozy fireplace) and the spacious open kitchen. From here, step out to the back patio or go passed the convenient mudroom to arrive at the garage. Upstairs, the master suite invites relaxation in its large shower and window-side tub. Even the walk-in closet has a window! Two more bedrooms can be joined by another if you choose to enclose the loft.