

B U I L D A D R E A M

Outstanding Style with Everyday Utility



An eye-catching tower adds a bit of Victorian flair to the exterior of this special home.

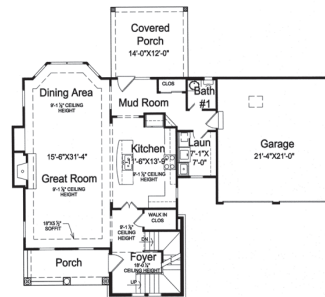
To build this home, you can order a complete set of construction documents by calling toll-free (866) 772-1013 or visiting www.ePlans.com/HouseOfTheWeek. Enter the design number to locate the plan and view more images and details. At www.ePlans.com/HouseOfTheWeek, you can view previously featured plans, browse other specialty collections, or use our search filters to help you find exactly what you want from over 28,000 home designs. Most plans can be customized to suit your lifestyle. See images of the plan online at www.ePlans.com/HouseOfTheWeek. Image Credit: ©www.ePlans.com. Printed with permission by Hanley-Wood, LLC. All rights reserved.

2,010 square feet

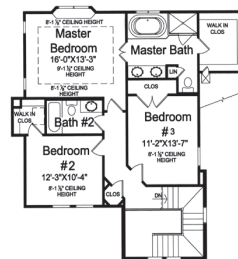
HOTW140029 Details

- **Bedrooms:** 3
- **Baths:** 2½
- **Main Level:** 1,104 sq. ft.
- **Upstairs Level:** 906 sq. ft.
- **Bonus Space:** 286 sq. ft.
- **Dimensions:** 59'2" x 49'8"
- **Framing:** 2x4
- **Foundation Options:**
Unfinished Basement

floor plan



second floor plan



An elegant tower draws all eyes to this unique home. Inside, that tower holds the staircase that takes you up to the luxurious master suite. Relax in the window-side tub, the large shower, or the bedroom under a decorative tray ceiling. Two more bedrooms also occupy this level, sharing a full hall bath. On the main floor, the super-open layout makes it easy to move between the great room, the island kitchen, and the bright dining area (complete with a beautiful bay window). Handy storage abounds, especially in the mudroom on the way in from the two-car garage.