

BUILD A DREAM



Decorative trusses and rugged stone add lots of interest to the exterior.

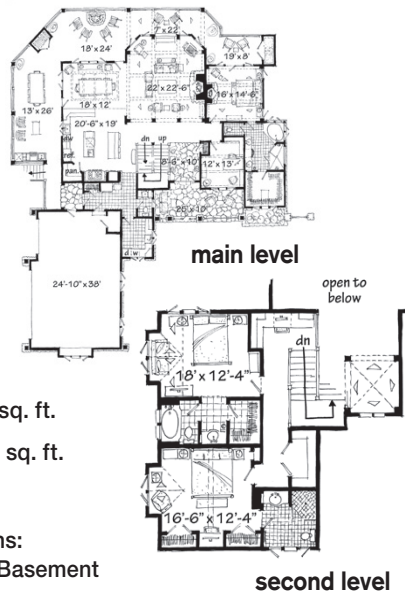
4,960 square feet

HOTW140033 Details

- Bedrooms: 4
- Baths: 4½
- Dimensions: 79'0" x 89'4"
- Main Level: 2,450 sq. ft.
- Second Level: 915 sq. ft.
- Framing: 2x6
- Foundation Options:
Finished Walkout Basement

Just the Right Rustic Touch

The use of natural materials in the rich appointments incorporated in this plan creates a look reminiscent of the great lodges of the west. Prominent trusses, decorative ceiling treatments, and large windows and doors to the decks and porches are just a few of the features that make this plan a “natural” for a setting where the outdoor spaces are as important as the indoors. A spectacular master suite on the main level, a finished lower level with guest suite and rec area, and two additional bedrooms (each with a private bath) round out the plan.



To build this home, you can order a complete set of construction documents by calling toll-free (866) 228-0193 or visiting www.ePlans.com/HouseOfTheWeek. Enter the design number to locate the plan and view more images and details. At www.ePlans.com/HouseOfTheWeek, you can view previously featured plans, browse other specialty collections, or use our search filters to help you find exactly what you want from over 28,000 home designs. Most plans can be customized to suit your lifestyle. See images of the plan online at www.ePlans.com/HouseOfTheWeek. Image Credit: Photo by MossPhotography.biz. Printed with permission by Hanley-Wood, LLC. All rights reserved.