



Modern Choice for a Narrow Lot



This contemporary exterior repeats rectangular shapes for a clean, modern effect.

3,848 square feet

HOTW150006 Details

■ Bedrooms: 4

■ Main Level: 1,615 sq. ft.

■ Dimensions: 42'4"x 71'0"

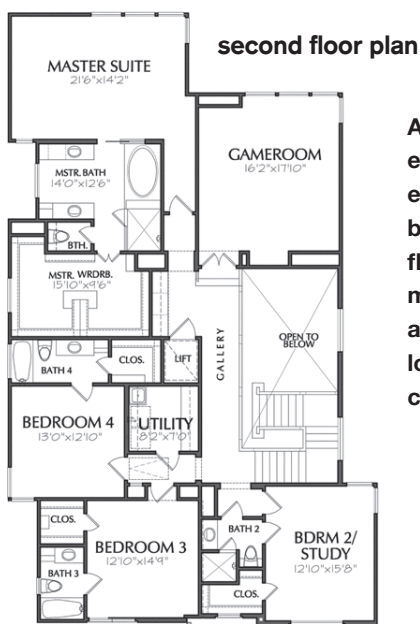
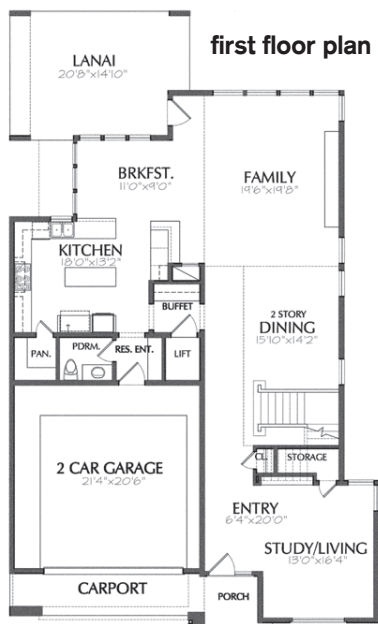
■ Baths: 4½

■ Second Level: 2,233 sq. ft.

■ Framing: 2 x 4

■ Foundation Options: Slab

This sleek home combines outstanding style with the kind of practical details that will make your day-to-day life easier. Take a look at the kitchen: a central island gives you room to chop veggies while guests can linger at the separate snack counter. Take the stairs or the elevator (a smart detail to make aging in place easier) up to the second level. Here, you'll find the ultra-spacious master suite, which offers enough closet space for even the biggest wardrobe. Three more bedrooms all include private baths and easy access to the laundry room.



An elevator ensures easy travel between floors, making this a smart long-term choice.

To build this home, you can order a complete set of construction documents by calling toll-free (866) 228-0193 or visiting www.ePlans.com/HouseOfTheWeek. Enter the design number to locate the plan and view more images and details. At www.ePlans.com/HouseOfTheWeek, you can view previously featured plans, browse other specialty collections, or use our search filters to help you find exactly what you want from over 28,000 home designs. Most plans can be customized to suit your lifestyle. See more images online at www.ePlans.com/HouseOfTheWeek. Image Credit: Photo by Diana Simonetta.